

Welcome to the first bulletin from InHealth Intelligence for all stakeholders of the West Yorkshire Diabetic Eye Screening Programmes (DESPs)

Stakeholders in Diabetic Eye Screening Programmes

DESP Stakeholders in West Yorkshire include: ICSs and ICBs, GP Practices, LMCs, Hospital Eye Services, Diabetes Oversight Group, Patient Groups including Healthwatch and Diabetes UK, Local Optometrist Committees. If you belong to any of these organisations and would like to be added to our distribution list to receive this bulletin in future, please email rayne.corkett@inhealth-intelligence.com.

We aim to provide the best possible service to eligible people with diabetes for up to five years. We will be working to the national guidelines for the delivery of the screening programmes and aim to build on the existing high-quality service that local people with diabetes already receive. We will have a strong emphasis on grading, quality, access and supporting as many people as possible to take up the screening offer as part of their wider diabetes care.

Transfer Dates

The Diabetic Eye Screening Programmes in West Yorkshire (West Riding and Craven, and Leeds and Mid Yorkshire areas) will transfer to InHealth Intelligence Ltd (IHI) on 1st April 2023. All IHI DESP staff will participate in a 'welcome day' for induction and training on 4th April 2023. Please Note: There will be no one in the office to respond to queries on 3rd or 4th April and there will be a lot of staff training during that first week.

Patient Data Transfer

Work on migrating all patient data from the existing system to InHealth Intelligence has begun. This will ensure the screening records and retinal images of all patients will transfer and means that we will invite them for screening when they are due. Unfortunately, we are not able to transfer information about the mobility needs of patients, so we will be asking patients to let us know if they have any specific requirements or require additional assistance.

Information Governance

We will be asking Hospital Eye Services to sign a 'Data Sharing Agreement' (DSA).

Signing up to our DSA will also give the Hospital Eye Services / Maternity / Diabetologists / Paediatricians appropriate access to our 'SPECTRA' IT System, which is a nationally approved diabetic eye screening software that allows eligible people with diabetes to be invited for screening and provides full management of the diabetic eye screening pathway.

We hope you can sign and return as soon as possible, please check with your IG lead. In support of 'Fair Processing', we can supply a poster for display on your patient notice board if required.

West Yorkshire Diabetic Eye Screening Programmes

Mobilisation Bulletin - January 2023

01

Jan, 25
2023

Referrals to the DESP

Clinical responsibility for patients who have diabetes but have not yet been referred to the DESP rests with the GP Practice. Once the referral has been made the responsibility for invitation, informing of results and referral for assessment and treatment passes to the DESP.

IHI will be using the existing 'GP2DRS' export system to collect information on patients with diabetes from GP Practices.

Screening Venues

We are looking for more venues for screening in all West Yorkshire areas to ensure that all eligible people with diabetes can take up the offer of screening in an accessible, convenient location, and work to reduce sight loss due to diabetic retinopathy within this area. We particularly want to hear from any GPs who may have a clinic room in their Practice/Surgery/Health Centre. We also have a mobile screening van, so if you have a good place to park with access to power and a toilet, please get in touch.

If you have a suitable venue for regular clinics, please contact
despprojectofficers@health-intelligence.com

Website and telephone numbers

There will be a new website for patients; we hope it will keep them informed about diabetic retinopathy, their appointment and how to contact us. It will also contain a link to access our Patient Portal, where patients can book / amend appointments and view their results. Details of our website will be in our next Bulletin.

The website will also have a Healthcare Professional section, designed to keep you up to date on what is going on within the Programmes. More details in our next bulletin.

New Telephone Numbers and Website information will be in the next Bulletin.

For any queries or for copies of any of the documents referred to above, please contact Rayne Corkett
rayne.corkett@inhealth-intelligence.com

Key Contacts

Managing Director

Philip Kirby: philip.kirby@inhealth-intelligence.com

Operations Director

John Grayland: john.grayland@inhealth-intelligence.com

Head of Diabetic Eye Screening Programmes

Bev Tolley: beverley.tolley@inhealth-intelligence.com

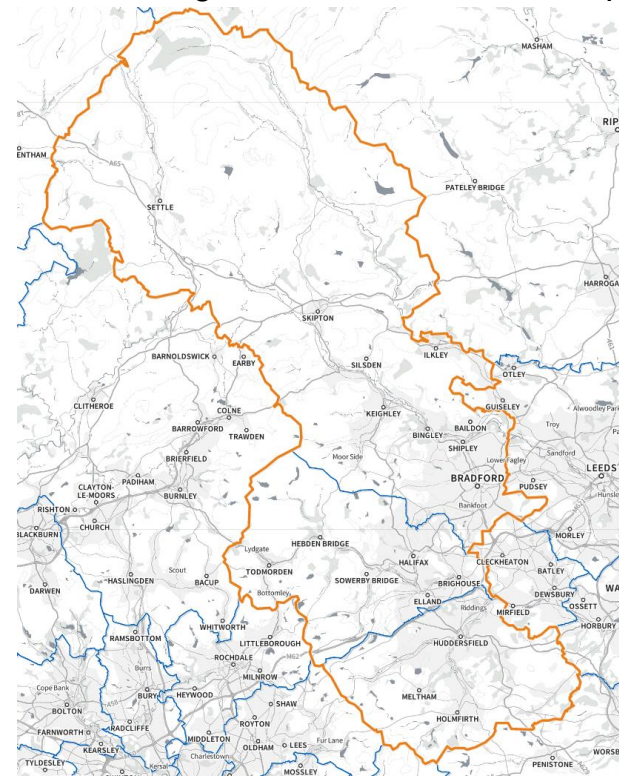
Operational Head of Failsafe

Jo Vodrey: joanne.vodrey@inhealth-intelligence.com

Head of Engagement

Rayne Corkett: rayne.corkett@inhealth-intelligence.com

West Riding & Craven DESP area map



Leeds and Mid Yorkshire DESP area map

